

Early Learning

INDIANA



EARLY HEAD START CHILD CARE PARTNERSHIP NETWORK 2023 ANNUAL REPORT

Early Learning Indiana (ELI) is proud to participate in the Early Head Start-Child Care Partnership initiative, providing continuous and comprehensive services to low-income children birth to three years of age and their families. Children receive the highest-quality infant and toddler care, including health services and family supports. The goal is to provide an individualized, responsive and inclusive educational approach for children and families that promotes opportunities for the healthy growth, education and development of infants, toddlers and their families.

Submitted by: Early Learning Indiana | 1411 Roosevelt Ave, Suite 202 | Indianapolis, IN 46201



EARLY HEAD START CHILD CARE PARTNERSHIP NETWORK

2023 ANNUAL REPORT

PROGRAM OVERVIEW

The Early Head Start Child Care Partnership supports Marion County's most vulnerable early learners in achieving school success through high-quality early care and education. Early Head Start teachers create positive learning experiences to meet the individual needs of each child and provide services and partnership to support the entire family's wellbeing. This includes delivering a broad range of education, health, nutrition, social and other services.

Early Learning Indiana is thankful for its community and stakeholders who continue to support our mission to provide comprehensive, high-quality programming for infants and toddlers, which has long-term positive impacts on both children and their families.

FISCAL DATA: SEPTEMBER 2023-AUGUST 2024

Revenue:

Program Operation Grant: \$4,055,643

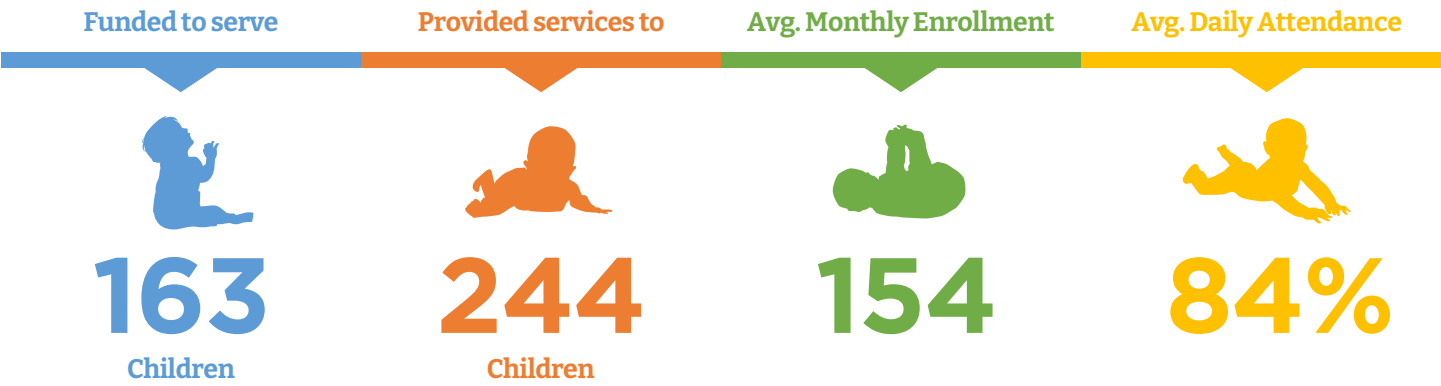
Public and Private Funds: \$131,062

TOTAL: \$4,055,643

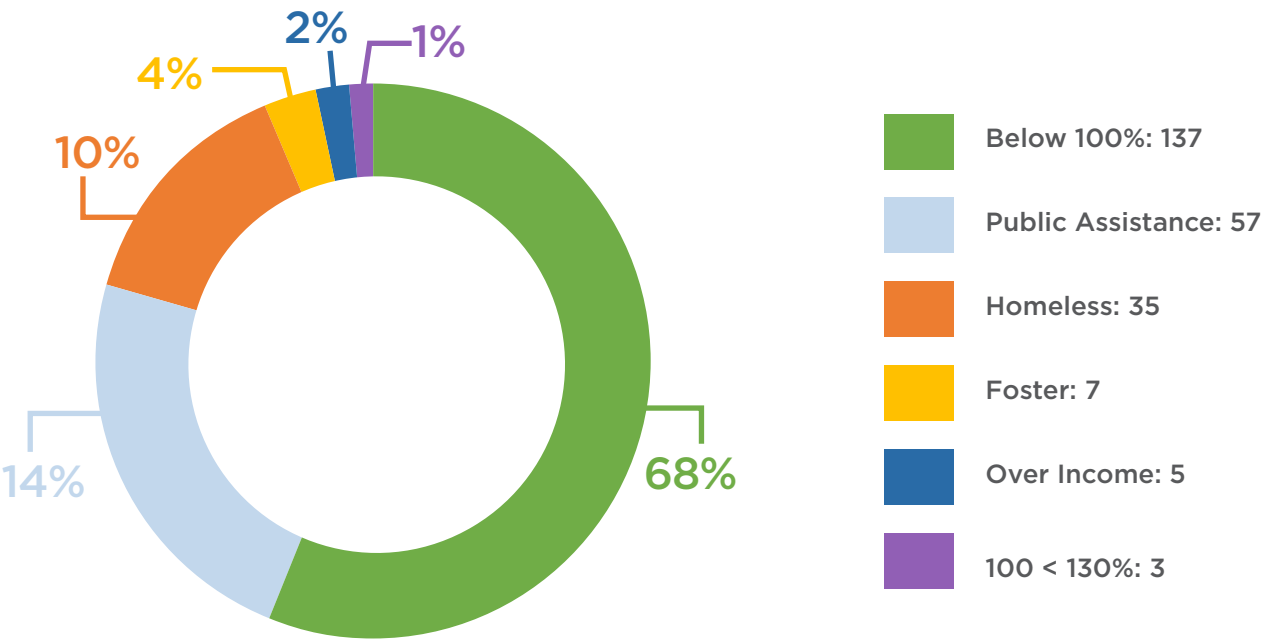
Expenses				
Categories	EHS Program Operations	EHS TTA	Total	ELI Total
Personnel	\$639,839	\$0	\$639,839	\$13,732,690
Fringe Benefits	\$143,683	\$0	\$143,683	\$2,570,563
Travel	\$0	\$37,089	\$37,089	\$161,266
Equipment	\$0	\$0	\$0	\$363,039
Supplies	\$7,761	\$0	\$7,761	\$661,031
Contractual	\$2,724,770	\$20,536	\$2,745,307	\$2,745,307
Construction	\$0	\$0	\$0	\$0
Other	\$341,596	\$18,817	\$360,413	\$51,228,118
Total Direct Charges	\$0	\$0	\$0	\$71,462,014
Indirect Charges	\$113,907	\$7,644	\$121,552	\$121,552
TOTALS	\$3,971,557	\$84,086	\$4,055,643	\$71,462,014

RESULTS OF THE OFFICE OF HEAD START MONITORING REVIEW

Early Learning Indiana was monitored in June 2020 as a grantee. The Office of Head Start completed an in depth review of program design and management, education and child development program services, health program services, family and community engagement services, ERSEA and fiscal infrastructure. Early Learning Indiana made satisfactory progress in all content areas. The review results were shared with partners and key stakeholders. The team continues to use program data to inform how we provide high-quality learning experiences to the children and support entire families in progressing toward their goals for self-sufficiency. The foundation for school success includes proactively building positive habits. Early Head Start supports families in recognizing the importance of attendance and parental involvement.



CHILDREN SERVED BY ELIGIBILITY DETERMINATION CATEGORIES
AUGUST 2023 - JULY 2024



HEALTHY AND READY TO LEARN

Comprehensive physical and dental health services ensure that infants and toddlers are able to learn and thrive. The Early Head Start Network team coordinates services provided at the program, as well as services offered in a home setting. As needed, families are given referrals to ensure children receive any resulting follow-up care.



99%

Children enrolled had established ongoing medical care.



73%

Children enrolled had established ongoing dental care.



82%

Children enrolled were up to date on immunizations.



FAMILY SUPPORT AND ENGAGEMENT

The Early Head Start Network recognizes parents and caretakers as children's first and most influential teachers. As such, the Network partners with each family to address their individual needs, serving as an advocate while connecting them with resources that promote economic stability.



96%







Families participated in Parent Connection Meetings.



PREPARING CHILDREN FOR KINDERGARTEN

The Early Head Start Child Care Partnership uses the Creative Curriculum for Infants, Toddlers and Twos in classrooms, which promotes a holistic approach to each child’s development. Additionally, centers within the child care partnership network use Teaching Strategies Gold, an individual assessment tool aligned with Indiana State Standards as well as the goals described in the Head Start Early Learning Child Outcomes Framework. Teachers utilize data collected from observations, parent feedback and previous assessment data to intentionally plan for individual activities that build children’s skills and prepare them for kindergarten.

PROGRESS ON SELECTED SKILLS

DEVELOPMENTAL SKILL	% OF CHILDREN WHO MEET OR EXCEED
 SOCIAL EMOTIONAL	86%
 PHYSICAL	86%
 LANGUAGE	79%
 COGNITION	89%
 LITERACY	86%
 MATH	86%

Appendix

Early Learning Indiana EHS-CCP Proposed Budget 24-25

BASE COSTS	2024-2025
TOTAL NETWORK SALARIES	659,450
TOTAL FRINGE BENEFITS (21%)	138,485
TOTAL SUPPLIES	5,000
TOTAL CONTRACTUAL	3,023,593
TOTAL OTHER	147,911

TOTAL BASE DIRECT COSTS	3,974,439
Modified Total Direct Cost (MTDC)	1,059,791
TOTAL BASE INDIRECT COSTS (10% <i>deminimis</i> rate)	90,450
	4,201,574
FEDERAL FUNDS REQUESTED	4,201,574

TRAINING/TECHNICAL ASSISTANCE	2024-2025
TOTAL TRAVEL	31,358
TOTAL OTHER	-
TOTAL CONTRACTUAL	32,470

TOTAL T/TA DIRECT COSTS	76,442
Modified Total Direct Cost (MTDC)	63,828
TOTAL T/TA INDIRECT COSTS (10% <i>deminimis</i> rate)	7,644
TOTAL PROPOSED T/TA COSTS	84,086
FEDERAL FUNDS REQUESTED	84,086

Total EHS 2024/2025

TOTAL DIRECT COSTS	4,159,423
TOTAL INDIRECT COST	112,362
TOTAL PROPOSED COSTS	4,271,785
FEDERAL FUNDS REQUESTED	4,271,785